

WT SERIES RESIDENTIAL WALL TYPE CABINET



WTR WALL TYPE CABINET

STANDARDS AND COMPLIANCES
ISO9001:2008 Quality Management System
IEC 297-1, 19" mounting standard
IEC 297-2, Overall cabinet dimensions
TS EN 61587-1 Standard.
Environment Friendly
%100 recyclable.
  

FIELD OF USE

WT Series Residential cabinets are used in residential network and electronics infrastructure services.

AESTHETIC VIEW

With the extruded aluminum glass frame and PVC band forum thereon, they present a decorative and professional appearance in its place.

REDUCED DEPTH

By the reduced depth and easily installable structure it facilitates installation and usage.



19" STRUCTURE

To the inner 2, 19" device installation rails, 19" devices and equipments with a reduced depth may be attached. Optionally, galvanized coating mounting plate may be preferred.

ADJUSTABLE DEPTH DEVICE INSTALLATION RAILS

Device installation rails are adjustable throughout the depth of the cabinet.

PASSIVE VENTILATION

By means of the passive ventilation slots on the upper and lower chassis, air circulation inside the cabinet is ensured.

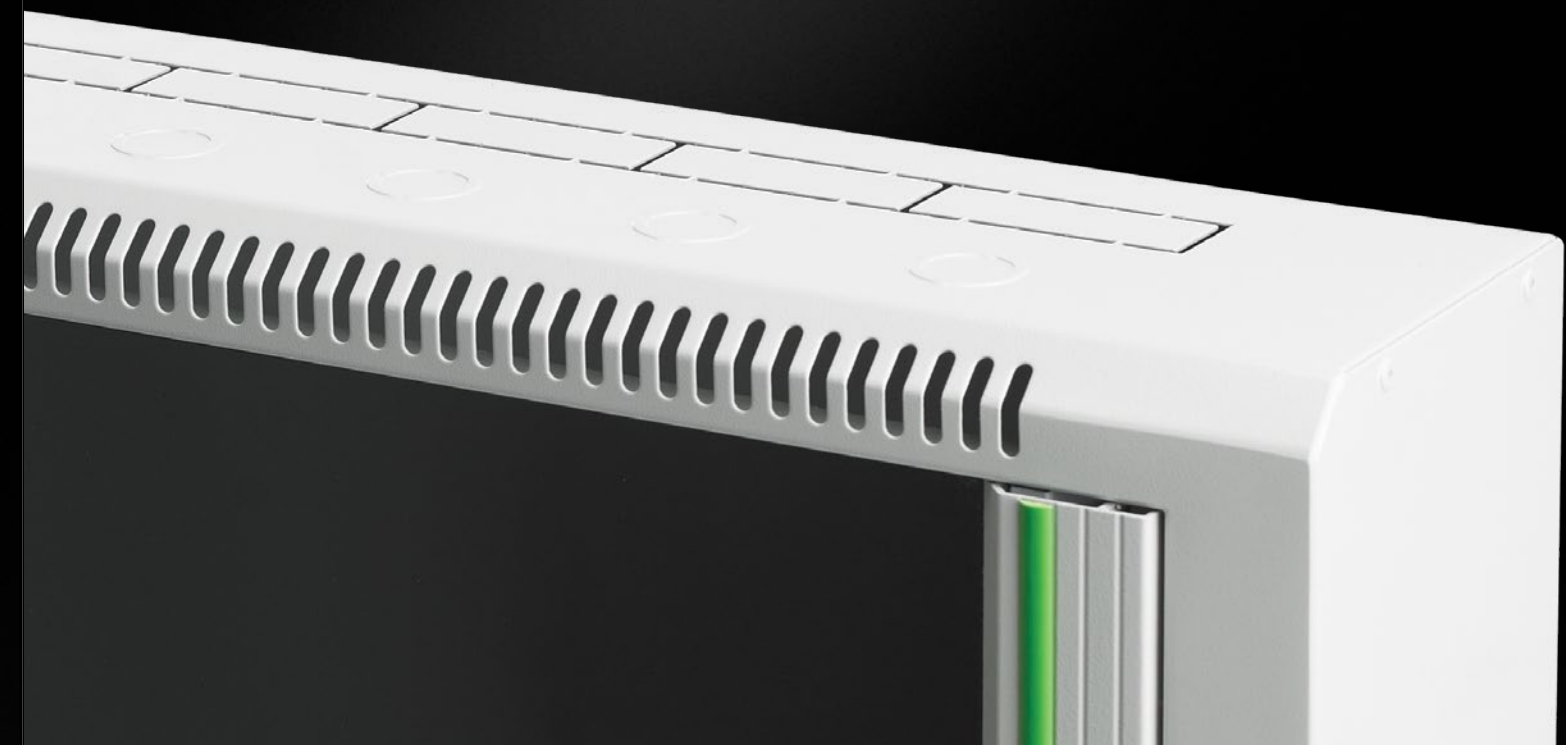
MULTI DIRECTIONAL CABLE INLETS

Totally 6, 30mm x 76,5mm and 6, 28mm diameter breakable rooms for cable inlets are found on the upper and lower chassis of the cabinet.



ERGONOMIC

Spring Loaded hinges of the front door allows changing the opening direction from left to right, or vice versa.



GLASS DOOR

Glass front door module with a barrel locking mechanism is 4mm, antistatic, tempered, smoothed, and has high resistance against fractures.

MOUNTED DISPATCH

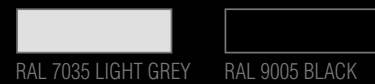
They are delivered mounted, as one-piece.

WTR WALL TYPE CABINET W=600mm D=150/300mm

WIDTH **W:** 600mm
DEPTH **D:** 150/300mm



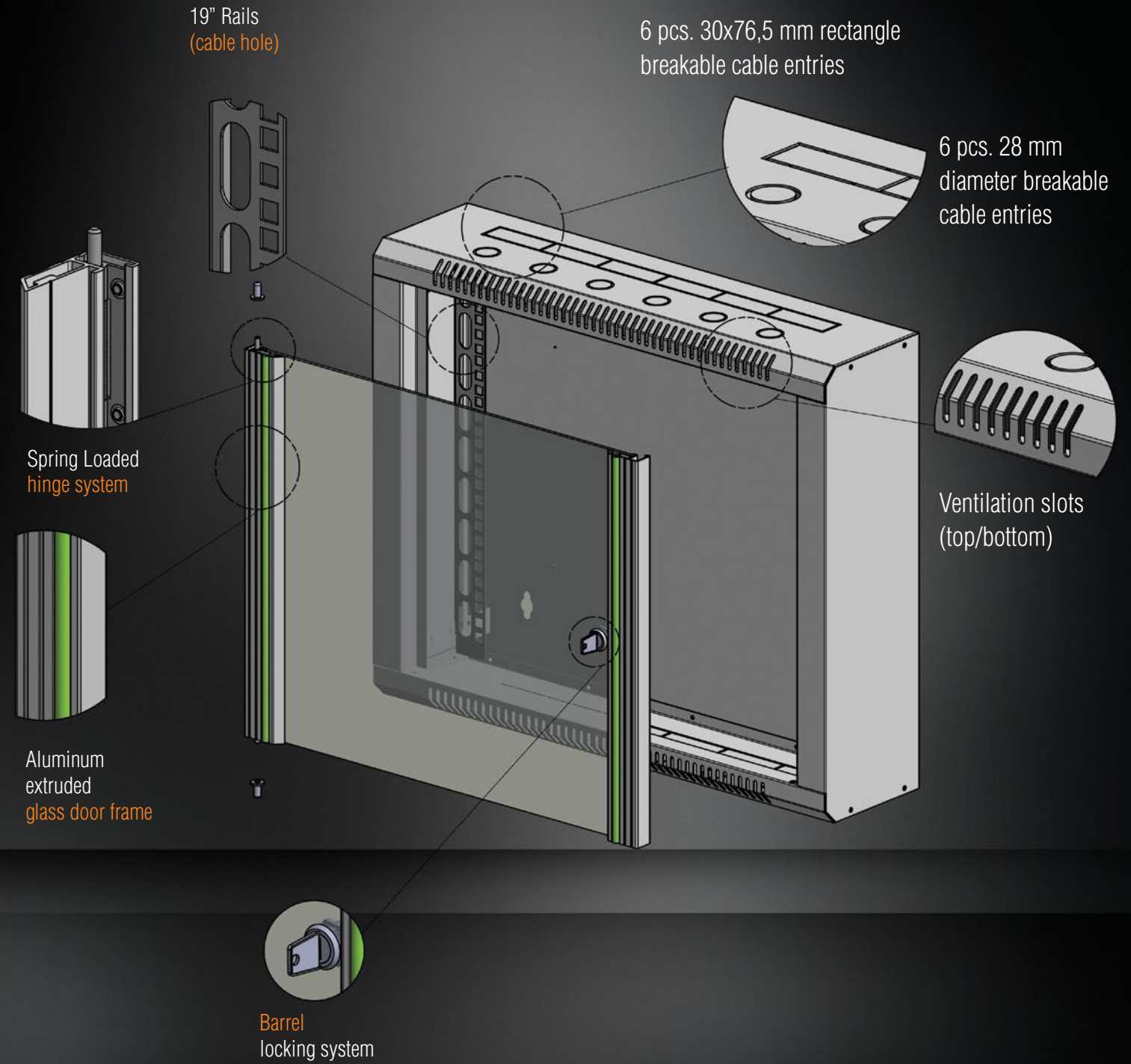
COLOR OPTIONS



LOADING CAPACITY : 80kg

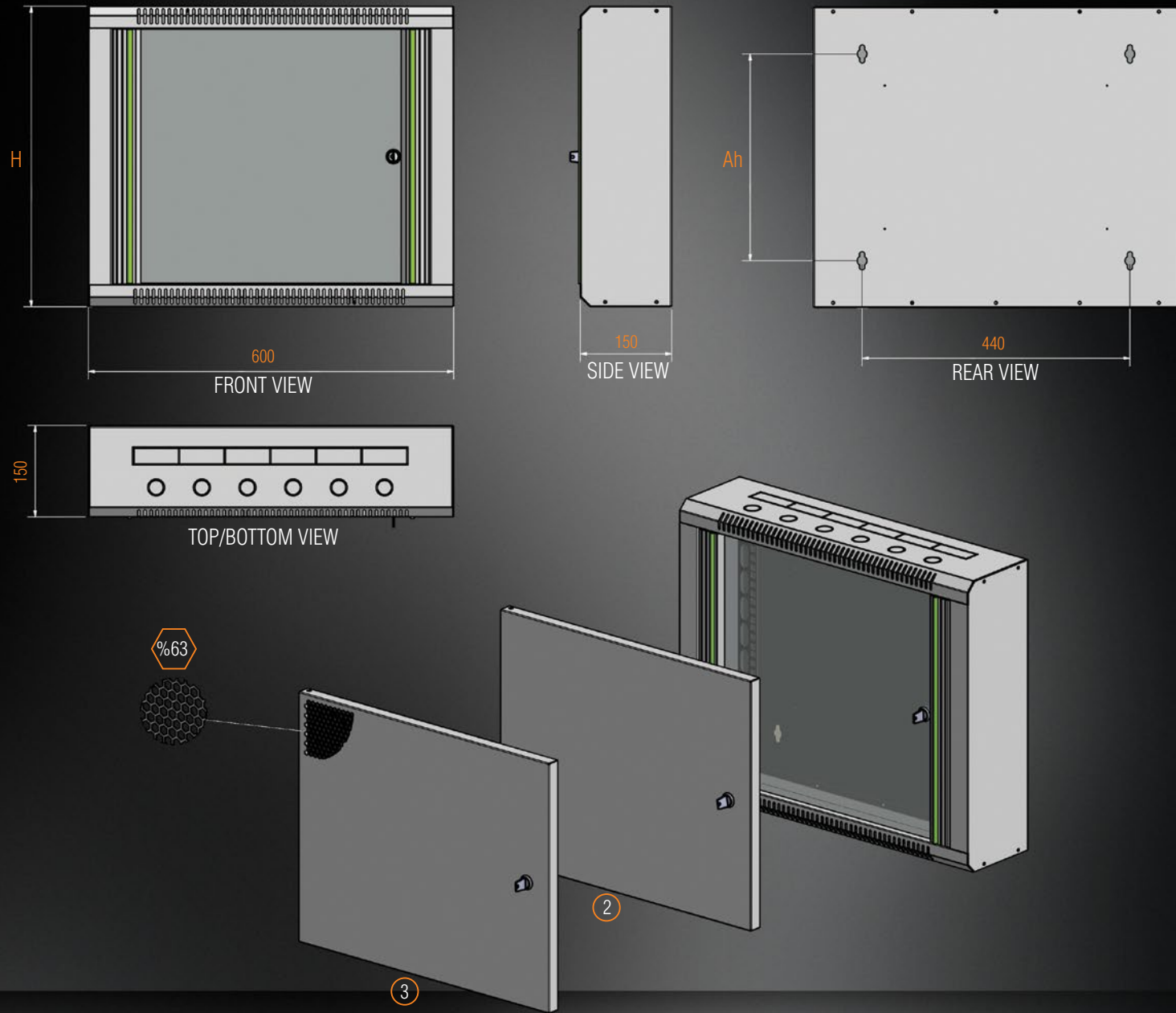
EXPLODED VIEW

WIDTH **W:** 600mm
DEPTH **D:** 150/300mm



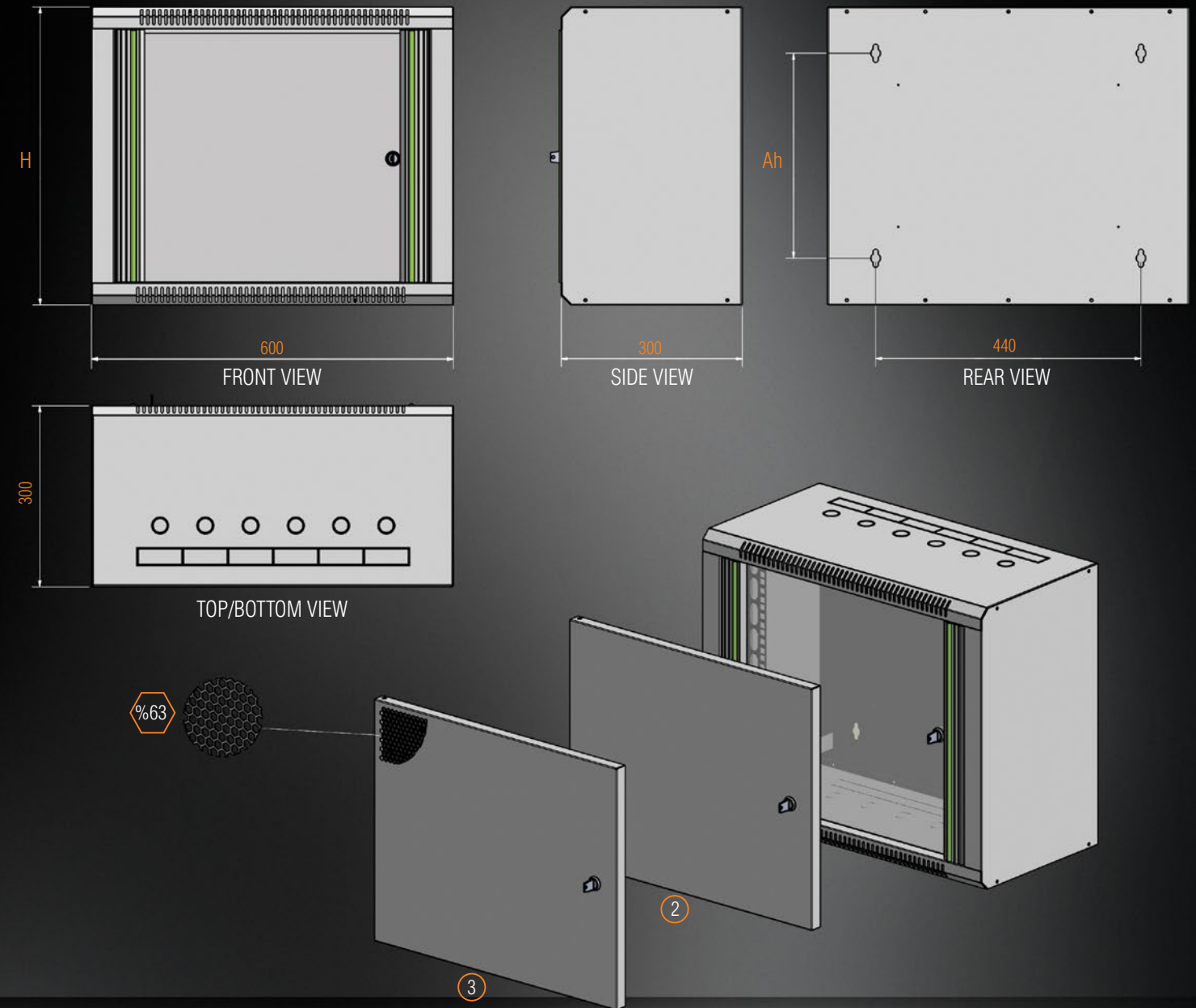
CONSTRUCTION DRAWINGS

WIDTH W: 600mm
DEPTH D: 150mm



CONSTRUCTION DRAWINGS

WIDTH W: 600mm
DEPTH D: 300mm



WT SERIES RESIDENTIAL WALL TYPE CABINETS W=600mm D=150mm

Product Code	Product Description	U Measurement (U)	Product Dimensions WxDxH (mm)	Width: Between Rails (mm)	U Wall Mounting Hole Gaps (mm)	U Measurement (mm)	Package Dimensions WxDxH (mm)	Number in the Package (pcs)	Product Net Weight (kg)	Product Gross Weight (kg)	Number on Pallet (pcs)	Pallet Dimensions WxDxH (mm)	Pallet Weight (kg)	DEPTH: Between rail and rear panel (mm)
MR.WTR06U15.XX	6U W=600mm D=150mm Wall Type RESIDENTIAL cabinet	6U	600x150x360	19"	207	620x170x395		1	7,3	8,2	60	1000x1320x2460	500	75
MR.WTR09U15.XX	9U W=600mm D=150mm Wall Type RESIDENTIAL cabinet	9U	600x150x494	19"	340	620x170x525		1	9,7	10,6	48	1000x1250x2160	530	75
MR.WTR12U15.XX	12U W=600mm D=150mm Wall Type RESIDENTIAL cabinet	12U	600x150x627	19"	473	620x170x660		1	12,8	13,7	24	680x1250x2280	345	75

XX=Color Code, 02 means Light Grey RAL 7035 and 01 means Black RAL 9005, the code is added by the customer at the order. | When one of the door options is selected, it should be informed at the order with its selected surface. | Standard cabinet: Front Door=1 (glass door)

WT SERIES RESIDENTIAL WALL TYPE CABINETS W=600mm D=300mm

Product Code	Product Description	U Measurement (U)	Product Dimensions WxDxH (mm)	Width: Between Rails (mm)	U Wall Mounting Hole Gaps (mm)	U Measurement (mm)	Package Dimensions WxDxH (mm)	Number in the Package (pcs)	Product Net Weight (kg)	Product Gross Weight (kg)	Number on Pallet (pcs)	Pallet Dimensions WxDxH (mm)	Pallet Weight (kg)	DEPTH: Between rail and rear panel (mm)
MR.WTR06U30.XX	6U W=600mm D=300mm Wall Type RESIDENTIAL cabinet	6U	600x300x360	19"	207	620x320x395		1	9,8	11	36	1000x1320x2460	420	225
MR.WTR09U30.XX	9U W=600mm D=300mm Wall Type RESIDENTIAL cabinet	9U	600x300x494	19"	340	620x320x525		1	12,7	14	28	1000x1250x2380	410	225
MR.WTR12U30.XX	12U W=600mm D=300mm Wall Type RESIDENTIAL cabinet	12U	600x300x627	19"	473	620x320x660		1	15,6	17,5	14	680x1250x2430	270	225

XX=Color Code, 02 means Light Grey RAL 7035 and 01 means Black RAL 9005, the code is added by the customer at the order. | When one of the door options is selected, it should be informed at the order with its selected surface. | Standard cabinet: Front Door=1 (glass door)